

Rex Gooding



121 Main Street, NG14 5EG

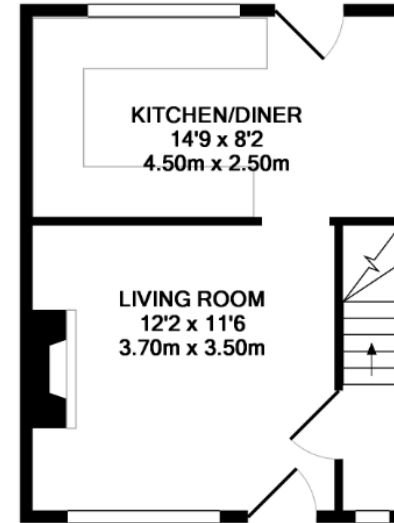
Asking Price: £225,000

121 Main Street, NG14 5EG

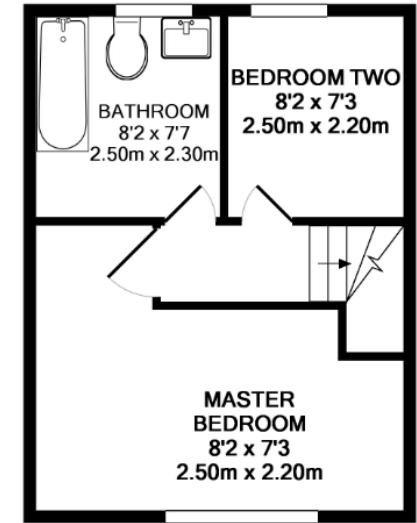
A lovely character cottage situated in the sought after village of Burton Joyce. Positioned just a short walk from the village amenities including shops, pubs and public transport links the property is double glazed throughout.....

Accommodation & Amenities

- Character Features Throughout
- Sought After Location
- UPVC Double Glazed
- Rear Garden
- Good Commuting Links
- Close To Local Amenities



GROUND FLOOR
APPROX. FLOOR
AREA 291 SQ.FT.
(27.0 SQ.M.)



1ST FLOOR
APPROX. FLOOR
AREA 291 SQ.FT.
(27.0 SQ.M.)

TOTAL APPROX. FLOOR AREA 581 SQ.FT. (54.0 SQ.M.)

Whilst every attempt has been made to ensure the accuracy of the floor plan contained here, measurements of doors, windows, rooms and any other items are approximate and no responsibility is taken for any error, omission, or mis-statement. This plan is for illustrative purposes only and should be used as such by any prospective purchaser. The services, systems and appliances shown have not been tested and no guarantee as to their operability or efficiency can be given
Made with Metropix ©2014



